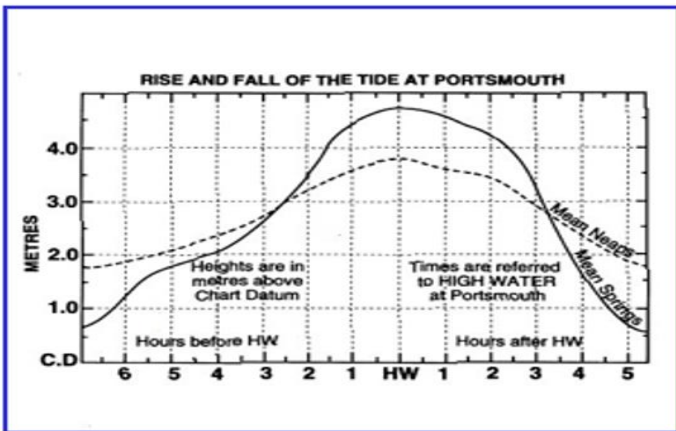


**PASSAGE PLAN**

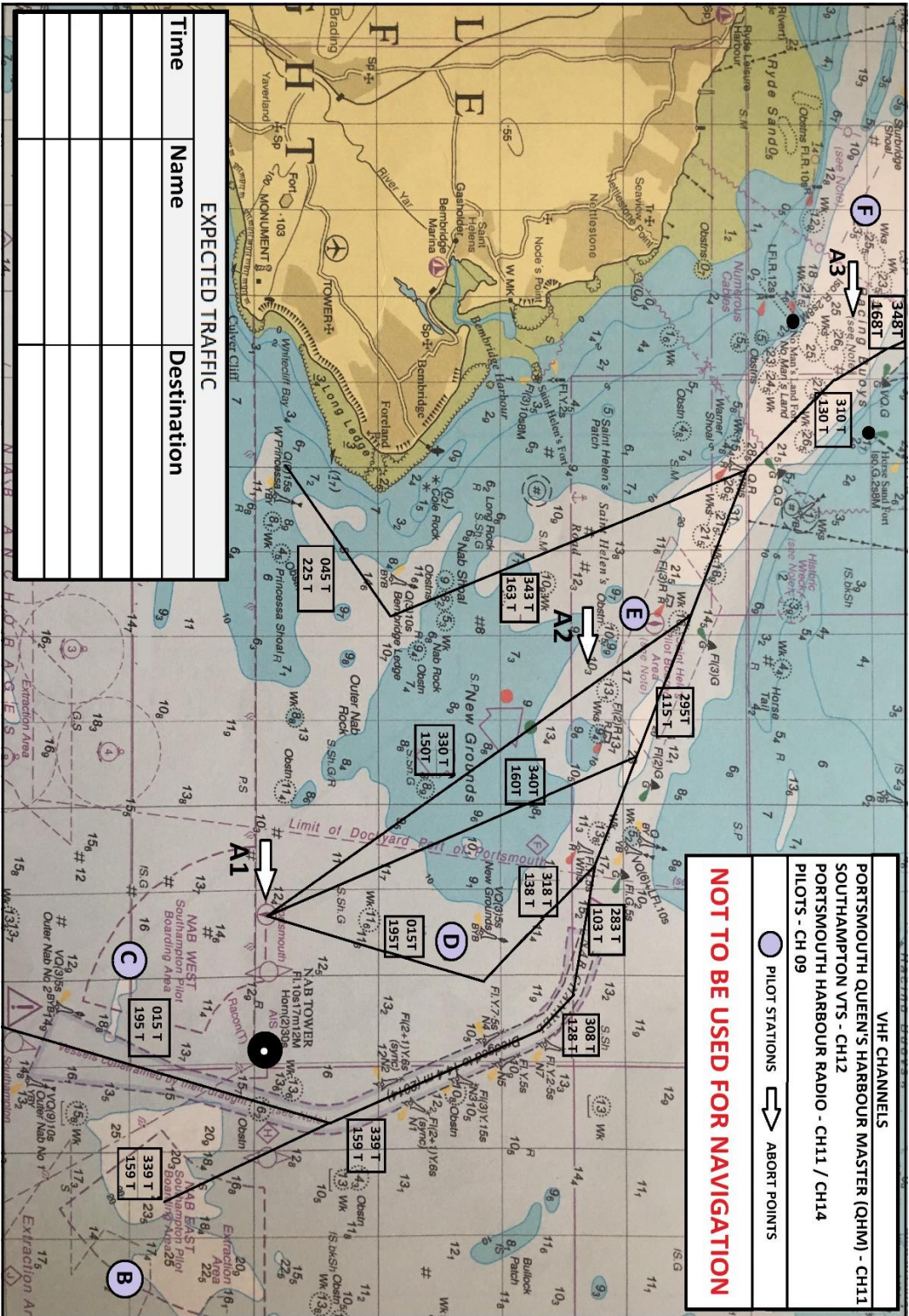
**NAB TOWER TO PORTSMOUTH INTERNATIONAL PORT**

SHIP'S NAME:		DATE:		ETA/ETD:	
BERTH/P STN:		LAST/NEXT PORT:			
BERTH/P STN:	To	OTHER DETAILS:			
DRAFT:		LOA:		IMDG:	
				TUGS:	

Passage Times	



Under Keel Clearance (UKC) Calculations			
Time of HW Portsmouth and Height of HW		Next LW and Height	
Vessel's ETA/ETD		Tidal Range	
Area	East Solent / Pilot Station	Upper Harbour	Berth
Interval from HW			
Predicted Height of Tide			
Least Charted Depth			
Meteorological Correction (+/-)			
Corrected Depth of Water			
Ship's Draft			
Squat effect?			
Calculated UKC			
UKC Required			



VHF CHANNELS  
 PORTSMOUTH QUEEN'S HARBOUR MASTER (QHMM) - CH11  
 SOUTHAMPTON VTS - CH12  
 PORTSMOUTH HARBOUR RADIO - CH11 / CH14  
 PLOTS - CH 09

○ PLOT STATIONS ⇨ ABORT POINTS

**NOT TO BE USED FOR NAVIGATION**

**EXPECTED TRAFFIC**

Time	Name	Destination

F  
 A3  
 168T  
 130T

E  
 A2  
 295T  
 115T

F  
 A1  
 340T  
 160T

D  
 318T  
 138T

C  
 015T  
 195T

B  
 339T  
 159T

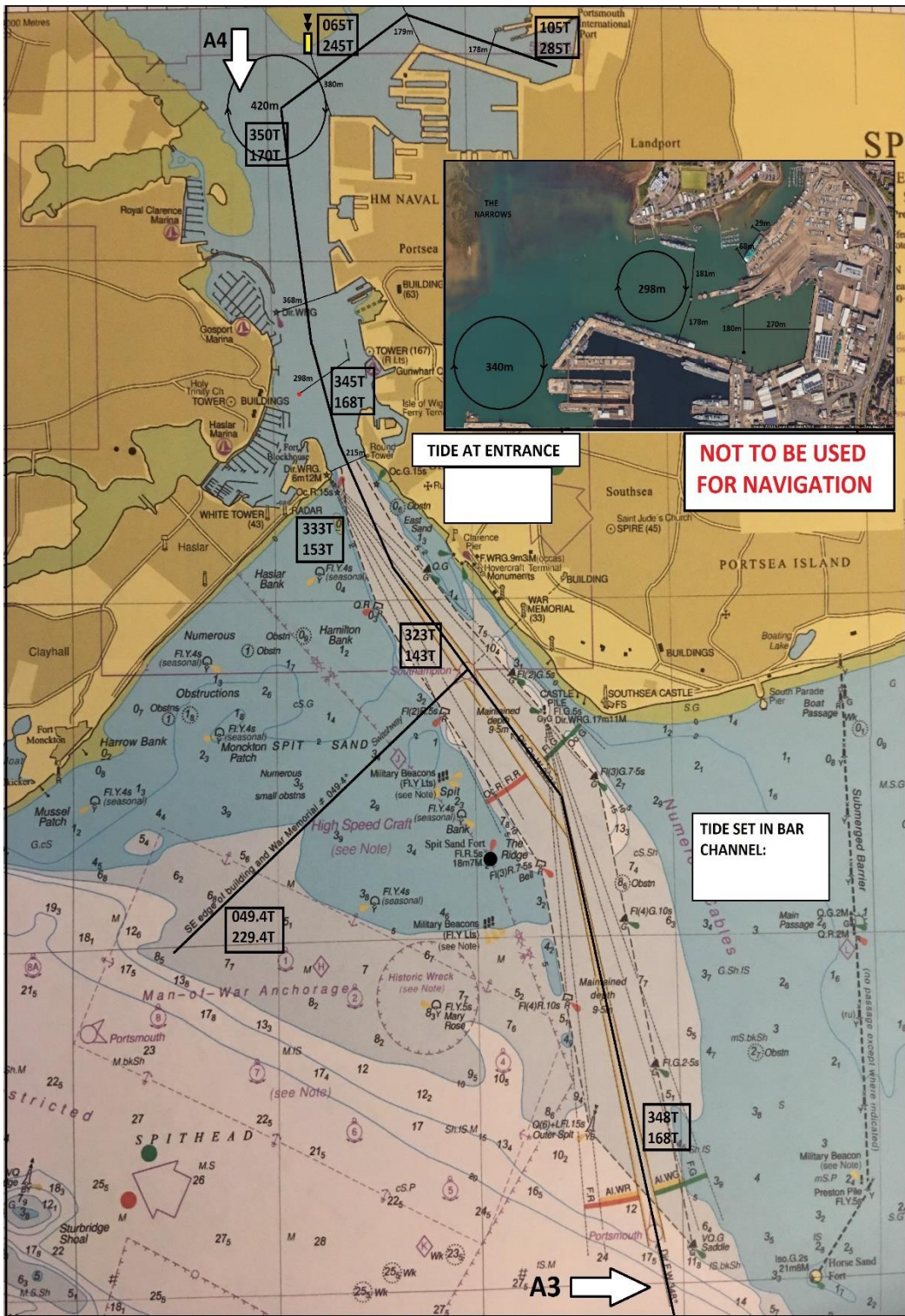
A2  
 045T  
 225T

A3  
 330T  
 150T

A1  
 015T  
 195T

B  
 339T  
 159T





TIDE AT ENTRANCE

NOT TO BE USED FOR NAVIGATION

TIDE SET IN BAR CHANNEL:

A3

TIME	NAB TOWER (EAST)	Dir °	Spr (knt)	Np (knt)	WARNER	Dir °	Spr (knt)	Np (knt)	OUTER SPIT BUOY (7 CABLES SW)	Dir °	Spr (knt)	Np (knt)	ENTRANCE	Dir °	Spr (knt)	Np (knt)
6B		085	0.7	0.3		122	0.6	0.3		089	0.7	0.4		336	1.2	0.3
5B		078	1.6	0.8		129	1.2	0.6		115	1.1	0.5		341	0.9	0.3
4B		078	1.8	0.9		129	1.3	0.7		117	1.4	0.7		336	0.4	0.5
3B		065	1.5	0.8		144	0.5	0.3		109	0.8	0.4		338	1.5	1.0
2B		048	0.9	0.4		335	0.4	0.2		033	0.3	0.1		343	2.8	1.3
1B		345	0.2	0.1		314	1.0	0.5		327	0.4	0.2		342	2.8	1.2
HW		282	1.3	0.7		311	1.5	0.8		292	1.2	0.6		329	0.4	0.2
1A		265	1.5	0.7		311	1.7	0.9		293	1.8	0.9		165	0.9	0.5
2A		252	1.6	0.8		313	1.0	0.5		288	1.5	0.7		164	1.6	1.5
3A		236	1.2	0.6		168	0.2	0.1		231	0.4	0.2		159	4.1	1.9
4A		218	0.9	0.4		149	0.9	0.5		152	0.5	0.3		155	3.0	1.0
5A		193	0.4	0.2		141	0.7	0.3		131	0.4	0.2		161	0.9	0.2
6A		095	0.4	0.2		111	0.4	0.2		080	0.6	0.3		334	0.9	0.3

Master - Pilot Exchange	Y/N
Any vessel defects?	
Engine/Thruster/Steering tested?	
Anchors ready to let go?	
VHF working channels 12/11/09	
Gyro error? Repeaters checked?	
Pilot card provided?	
Weather forecast:	
Tugs required? SWL of bits?	
Passage Plan and Berthing/Unberthing Plan agreed?	
Working language in English	
Tug line/Heaving line safety discussed?	
LNTM's / Nav Warnings/ Tug Positions/ Notes:	

% Mean Springs		
Location	Set	Rate

Berth	Length(m)	Line (deg)
AJQ	245*	010/190
FHQ	170*	072/252
Linkspan 1	70	048/228
Linkspan 2	255	073/253
Linkspan 3/4	210/215	080/260
Linkspan 5	125	040/220

### Bollard Pull Verification for Surface Area (M.sq)

LOA	Vessel Height in Metres														
	5	7.5	10	12.5	15	17.5	20	22.5	25	30	32.5	35	37.5	40	
50	250	375	500	625	750	875	1000	1125	1250	1375	1500	1625	1750	1875	2000
75	375	563	750	938	1125	1313	1500	1688	1875	2063	2250	2438	2625	2813	3000
100	500	750	1000	1250	1500	1750	2000	2250	2500	2750	3000	3250	3500	3750	4000
125	625	938	1250	1563	1875	2188	2500	2813	3125	3438	3750	4063	4375	4688	5000
150	750	1125	1500	1875	2250	2625	3000	3375	3750	4125	4500	4875	5250	5625	6000
175	875	1313	1750	2188	2625	3063	3500	3938	4375	4813	5250	5688	6125	6563	7000
200	1000	1500	2000	2500	3000	3500	4000	4500	5000	5500	6000	6500	7000	7500	8000
225	1125	1688	2250	2813	3375	3938	4500	5063	5625	6188	6750	7313	7875	8438	9000
250	1250	1875	2500	3125	3750	4375	5000	5625	6250	6875	7500	8125	8750	9375	10000
275	1375	2063	2750	3438	4125	4813	5500	6188	6875	7563	8250	8938	9625	10313	11000
300	1500	2250	3000	3750	4500	5250	6000	6750	7500	8250	9000	9750	10500	11250	12000

Lateral Surface Area (m2)	Wind speed in knots									
	5	10	15	20	25	30	35	40	45	50
0	0	1	2	4	6	9	12	16	20	25
1000	1	2	5	8	13	18	25	32	41	50
1500	1	3	7	12	19	27	37	48	61	75
2000	1	4	9	16	25	36	49	64	81	100
2500	1	5	11	20	31	45	61	80	101	125
3000	2	6	14	24	38	54	74	96	122	150
3500	2	7	16	28	44	63	86	112	142	175
4000	2	8	18	32	50	72	98	128	162	200
4500	2	9	20	36	56	81	110	144	182	225
5000	3	10	23	40	63	90	123	160	203	250
5500	3	11	25	44	69	99	135	176	223	275
6000	3	12	27	48	75	108	147	192	243	300
6500	3	13	29	52	81	117	159	208	263	325
7000	4	14	32	56	88	126	172	224	284	350
7500	4	15	34	60	94	135	184	240	304	375
8000	4	16	36	64	100	144	196	256	324	400
8500	4	17	38	68	106	153	208	272	344	425
9000	5	18	41	72	113	162	221	288	365	450
9500	5	19	43	76	119	171	233	304	385	475
10000	5	20	45	80	125	180	245	320	405	500
10500	5	21	47	84	131	189	257	336	425	525
11000	6	22	50	88	138	198	270	352	446	550
11500	6	23	52	92	144	207	282	368	466	575
12000	6	24	54	96	150	216	294	384	486	600